

FILIATREULT, Serge: *Odyssée*

FILIATREULT, Serge (b. 1958) – M – Region: Québec (B); Ontario (R).

Odyssée (1980) For bass trombone and piano. Duration: 4:00.

Availability: [Pine Grove Music](#) SF-01. (formerly published by Cazes Cuivres, ISBN: 2-920275-01-1, © 1981).

Copy Quality: manuscript (clear).

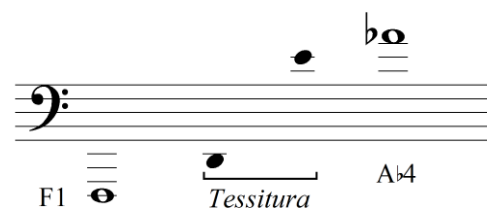
Level of Difficulty: 5.

Notation: standard; unmetered (cadenza).

Special Techniques: glissando.

Equipment/Mutes: two valves required.

Range / Clefs / Tessitura:



Overview:

Sections / Tempos	Meter	Rhythms
Lento espressivo	3/4, 4/4, 2/4	32 nd , 5:2
Moderato marcato	1/4, 2/4, 3/4, 4/4, 5/4, 6/4, 2/8, 3/8, 5/8, 6/8, 7/8, unmetered (cadenza)	16 th

Technical Characteristics: Although the tessitura is quite moderate, a good pedal register down to F₁ is required. There is just one A_{♭4} at the top of the range. The performer will also need good flexibility for several large interval leaps up to an octave, and for frequent passages that cover more than a two-octave range within a measure or two (see Figure 1). Good slide dexterity will be needed for the faster middle section; although not very fast, it contains a few 16th note patterns, mixed meters and syncopation, all of which must be rhythmically accurate (see Figure 2). The piano part is just as challenging as the solo part; adequate rehearsal time is necessary to achieve good ensemble coordination.

Figure 1. Filiatreault: *Odyssée*, measures 48-52.

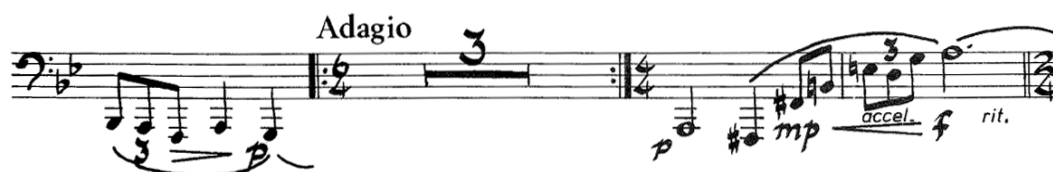


Figure 2. Filiatreault: *Odyssée*, measures 35-41.



Musical Characteristics: This work begins slowly and expressively with a recitative-like introduction in the trombone part (see Figure 3). A rhythmically intricate marcato section follows, featuring frequent mixed meters and jazzy, syncopated rhythms in both parts. An extended trombone cadenza leads to a slow piano interlude, after which the piece returns to the opening material for its conclusion. The harmonic language consists of some traditional harmony, quartal harmony and bitonality.

Figure 3. Filiatreault: *Odyssée*, measures 1-3.



Pedagogical/Performance Value: As both a composer and bass trombonist, Serge Filiatreault has written an excellent, very idiomatically well-written work for his instrument. Suitable for senior, graduate or professional recitals, this work features a variety of the bass trombone's distinctive characteristics within its short duration.

Supplementary Information:

Premiere: 1982, McGill University, Montréal, QC; Serge Filiatreault, bass trombone;
Dominique Laberge, piano.

Inclusion in other bibliography: Everett (1985, 23).