

BOUCHARD, Rémi: *Riding Mountain*

BOUCHARD, Rémi (b. 1936) – M – Region: Manitoba (B); Manitoba (R).

Riding Mountain (1982) For trombone and piano. Duration: 3:30.

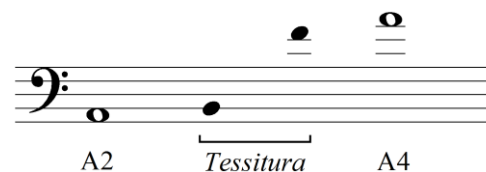
Availability: [Pine Grove Music](#) PG-02, © 2003 (CMC Call #: MI 6213 B752rid).

Copy Quality: computer.

Range / Clefs / Tessitura:

Level of Difficulty: 3.

Notation: standard.



Special Techniques: none.

Equipment/Mutes: F-attachment not required, but helpful.

Overview:

Tempo	Meter	Rhythms
Andante pastorale	6/8	8 th , duplets

Technical Characteristics: With a strong 6/8 feel and very simple rhythms, the only rhythmic challenge is alternating between triplet and duplet 8th notes (see Figure 1). There are only a few notes above the moderate tessitura, including just one high A₄. Melodic intervals move mostly stepwise or in thirds, with just a few larger leaps up to a seventh (see measures 11-12 in Figure 1). Most phrase lengths are short, and there are plenty of rests, so endurance is not an issue; however there are a couple of longer phrases for which it may be difficult to find a good place to breathe. Coordination with the piano part is straightforward.

Figure 1. Bouchard: *Riding Mountain*, measures 8-19.



Musical Characteristics: This is a tonal, lyrical work with a flowing 6/8 feel. The trombone begins with an extended unaccompanied introduction, like a recitative. Parallel open fifths in the piano give the accompaniment a modal quality and a feeling of spaciousness, while sweeping arpeggiated seventh chords add colour and richness. Although not programmatic, this work was inspired by Riding Mountain National Park, a protected forest on the Manitoba Escarpment.

Pedagogical/Performance Value: This is a beautiful work that an upper-level high school student could use for the development of legato playing in an expressive style. With its significant audience appeal it is an excellent addition to any recital program.

Supplementary Information:

Dedication: Dedicated to Robert Fraser.

Syllabus listing: [ACNMP](#) Contemporary Showcase Syllabus (Class 2102 Intermediate).