

BOUCHARD, Rémi: *Prairie Desert*

BOUCHARD, Rémi (b. 1936) – M – Region: Manitoba (B); Manitoba (R).

Prairie Desert (1980) For trombone and piano. Duration: 2:30.

Availability: [Pine Grove Music](#) PG-01, © 2003 (CMC Call #: MI 6213 B752pra).

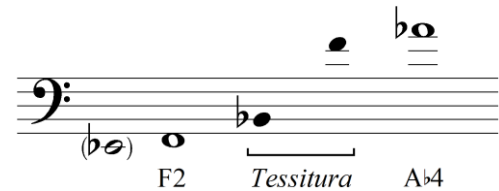
Copy Quality: computer.

Range / Clefs / Tessitura:

Level of Difficulty: 3.

Notation: standard.

Special Techniques: none.



Equipment/Mutes: F-attachment required.

Overview:

Tempo	Meter	Rhythms
Andante moderato	4/4	8 th

Technical Characteristics: Although the trombone part is rhythmically uncomplicated, it can initially be difficult to coordinate with the piano whose opening triplets (doh-sol-doh / sol-doh-sol) sound deceptively like 16th notes. This pattern is followed by quintuplets, then six (in the right hand) against four (in the left hand), but the first note of each of these patterns is always the highest, which at least provides a strong foundational pulse. There are no large leaps in the trombone part, but many phrases are comprised of sequential fourths encompassing at least an octave, if not two (see Figure 112), so the performer must have enough flexibility to move seamlessly between registers.

Figure 112. Bouchard: *Prairie Desert*, measures 36-42.



Musical Characteristics: This is a tonal work that features non-functional quartal and quintal harmonies and bitonal elements, and showcases the trombone's lyricism and expressivity. Although not programmatic, *Prairie Desert* was inspired by the landscape of the Spirit Sands found in the Spruce Woods Provincial Park in Manitoba.

Pedagogical/Performance Value: An appealing recital piece for any level, *Prairie Desert* would also serve well as a lyrical etude or audition/jury piece.

Supplementary Information:

Dedication: Written for Robert Fraser.

Syllabus listing: [ACNMP](#) Contemporary Showcase Syllabus (Class 2102 Intermediate).